

**Walton High School**

# **10th Grade**

**Bridge Law Counseling Lesson**

# WHO IS YOUR SCHOOL COUNSELOR?



A – Ch

Mrs. Clary



Ci – G

Mrs. Alpert



H – K

Mrs. Dunham



L – N

Mrs. Watford



O – SI

Mrs. Harwood



Sm – Z

Mrs. Fay

# OTHER COUNSELING PERSONNEL

---



College Advisor

Dr. England



Records Clerk

Mrs. Schrenk



FOLLOW US ON OUR

# SOCIAL MEDIA



@waltonhighcounselors



@waltoncounselor



@waltonhighcounselors

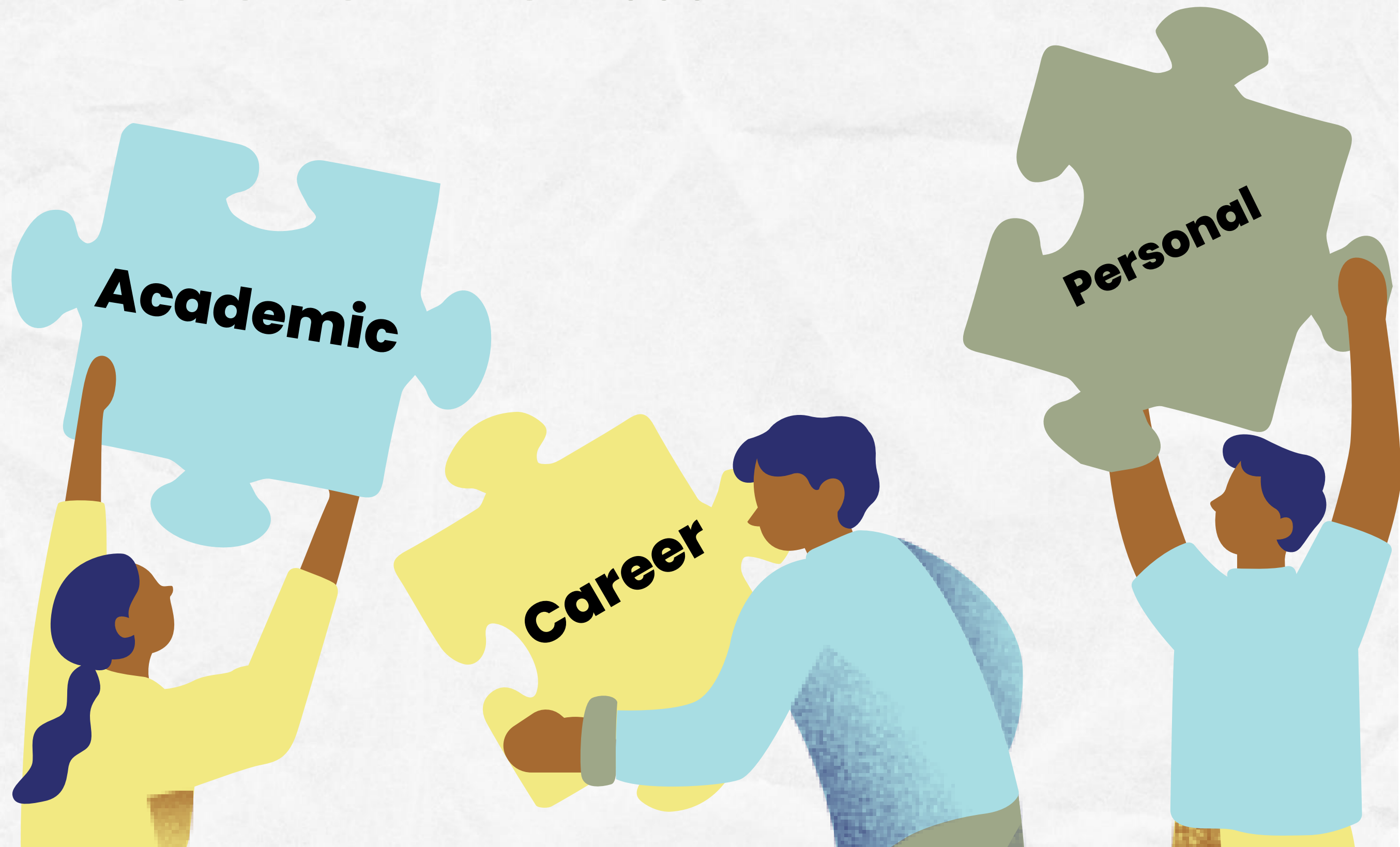


@walton\_counselors

Scan QR code to follow us on your  
preferred social media platform



# You might see your School Counselor for...





# Confidentiality/Safety



## CONFIDENTIALITY

**What is said with your counselor will stay with your counselor.**

### **UNLESS:**

- **Someone is harming you**
- **You are a danger to yourself**
- **You are a danger to others**



## SAFETY

**If you are worried about a friend/peer, notify a counselor immediately.**

**(ex. suicide, alcohol, drugs, abuse, social media post, etc.)**

# WHAT'S AFTER HIGH SCHOOL?





# Let's Talk About...



**Graduation Requirements**

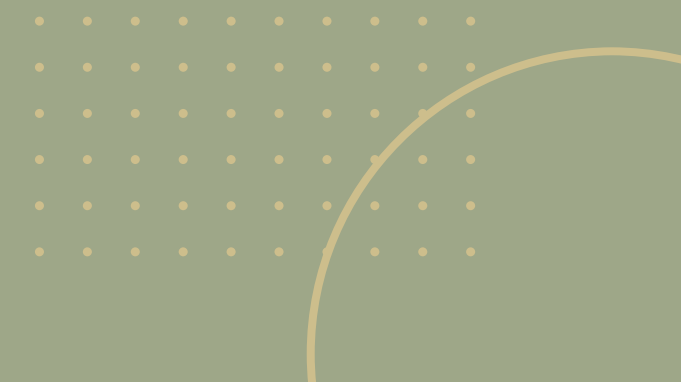
**HOPE**

**Dual Enrollment**

**Naviance**



# Graduation Requirements



# Graduation Requirements

Subject	# of credits needed
English	<b>4 credits</b> (9 <sup>th</sup> Lit, American Lit)
Math	<b>4 credits</b> (Algebra 1, Geometry, Advanced Algebra)
Science	<b>4 credits</b> (Biology, Physics/Physical Science, Chemistry/Environmental Science/Earth Systems)
Social Studies	<b>3 credits</b> (World History, US History, Economics/Government)
Health and Personal Fitness	<b>1 credit</b>
Career Tech/Fine Arts/Foreign Language	<b>3 credits</b>
General Electives	<b>4 credits</b>
<b>TOTAL</b>	<b>23 credits</b>



# Promotion Requirements

**What courses do  
I need to pass to  
become a junior?**

Must have a total of **10 credits**.

Of those 10 credits:

Must pass **2 credits English**

Must pass **2 credits Math**

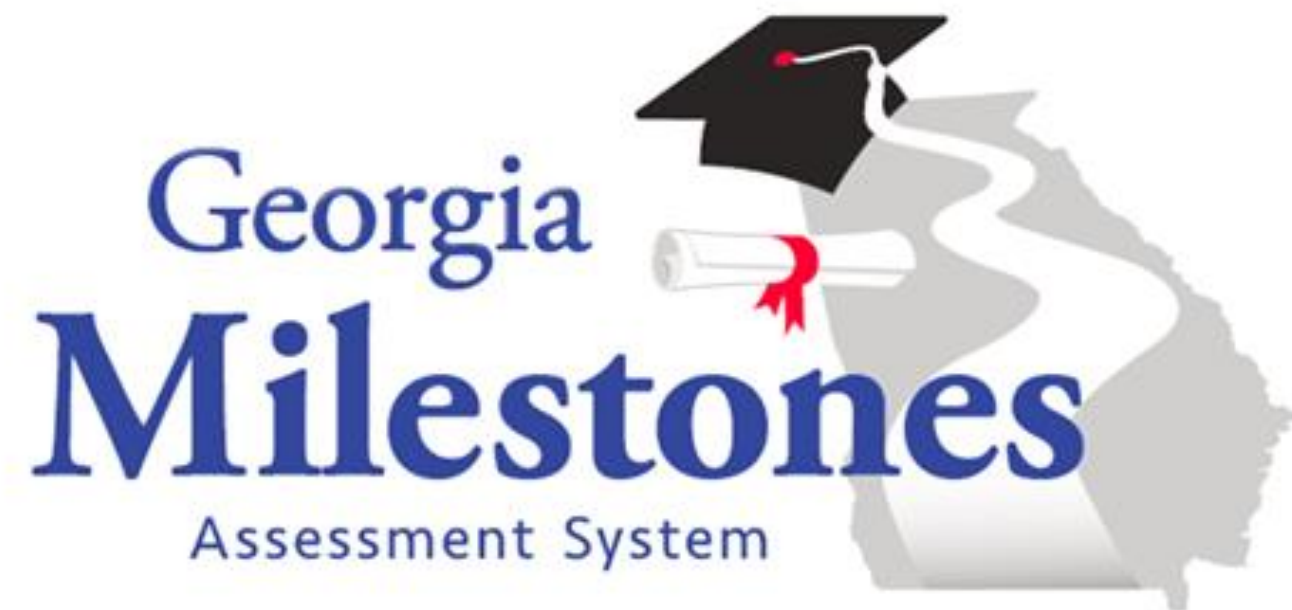
Must pass **2 credits Science**

Must pass **4 additional credits**

# EOC TESTING

---

- The Georgia End-of-Courses (EOC) are statewide tests that assess student knowledge and skills in the four core subjects:
  - Am Lit
  - Algebra I
  - Biology
  - US History
- EOCs will be given in late April to early May
- EOC scores factor 20% into your final grade
- Test Prep & Resources
  - Study guides
  - Practice tests
  - Peer tutoring
  - Extra help sessions with teachers
  - Study skills





# HOPE



# HOPE Scholarship Program

## What is HOPE?

(Helping Outstanding Pupils Educationally)

These scholarships are awarded to Georgia residents who have demonstrated specific academic achievements. These scholarships assist students with paying for tuition at any public university or technical college, or eligible private colleges/universities within Georgia. The criteria varies for each scholarship. This is a great way for students to get help with paying for their post-secondary education!



# HOPE SCHOLARSHIPS & GRANTS REQUIREMENTS

---

- **HOPE Scholarship (4-year public college in Georgia)**
  - 3.0 GPA for core academic courses – The BIG FIVE
    - English, Math, Science, Social Studies, & World Languages
  - 4 HOPE rigor courses
- **Zell Miller Scholarship (4-year public college in Georgia)**
  - 3.7 GPA for core academic courses – The BIG FIVE
  - English, Math, Science, Social Studies & World Languages
  - 1200 on SAT (1 sitting) or 26 on ACT (1 sitting)
  - 4 HOPE rigor courses
- **HOPE Grant (2-year technical college in Georgia)**
  - For students seeking specific technical certificates or diplomas
  - No GPA requirement
  - No testing requirement
  - No rigor course requirement



# HOPE REMINDERS

---

- HOPE GPA is calculated by the Georgia Student Finance Commission (GSFC) and found on the [GAfutures website](#) (it is not listed on the Walton transcript)
- [Click here](#) for the updated HOPE rigor course list
- We must have your SSN in the Cobb record system to receive HOPE funds
- [Click here](#) to learn more about the HOPE and Zell Miller Scholarships
- [Click here](#) to learn more about the HOPE Grant



# HOPE Scholarship Program

## What are rigor courses?

**Some graduation requirements qualify as rigorous courses. As you are registering for 11th and 12th grade, keep these courses in mind. Example of rigor courses are:**

- **Math (Adv Algebra, Pre-Calc, AMDM)**
- **Science (Physics, Chemistry)**
- **AP Classes**
- **Dual Enrollment academic classes**
- **World Language (Level 2 and higher)**

# HOPE GPA and Transcript

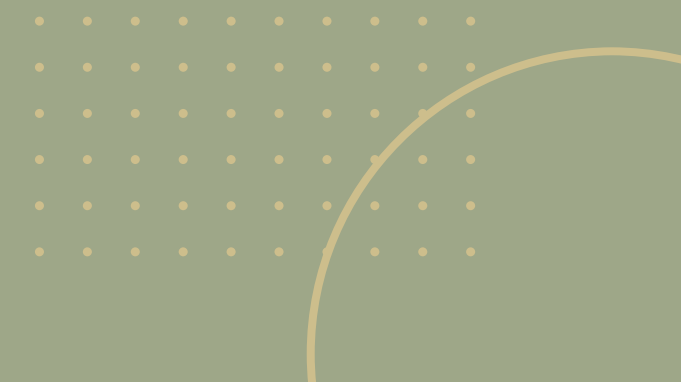
**HOPE GPA= The average of your core classes (English, math, science, social studies), world language classes, and some computer science classes!**

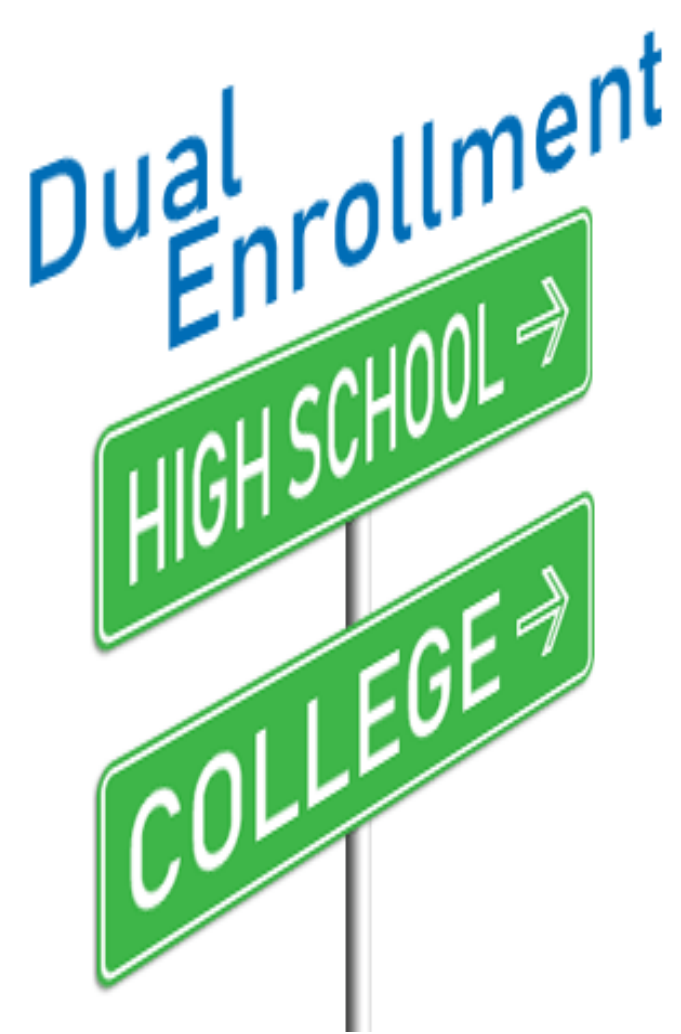
**ONLY SOME AP/DE earn Extra Quality Points up to a 4.0**

Regular On-Level	Honors Level	AP/DE
A=4.0	A=4.0	A=4.0
B=3.0	B=3.0	B=3.5
C=2.0	C=2.0	C=2.5
D=1.0	D=1.0	D=1.5
F=0.0	F=0.0	F=0.0



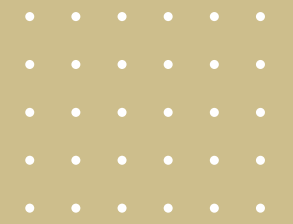
# Dual Enrollment





- Georgia's Dual Enrollment (DE) program allows high school students to earn college credit while working on their high school diploma.
- DE covers tuition, mandatory fees, and required textbooks.
- The goal of DE is to increase college access and completion and prepare students to enter the workforce with the skills they need to succeed.
- Students can take both academic and CTAE (career tech) courses.
- [Click here](#) for more information regarding DE, including how to register for upcoming **mandatory** DE information sessions in the School Counseling suite.

# Dual Enrollment

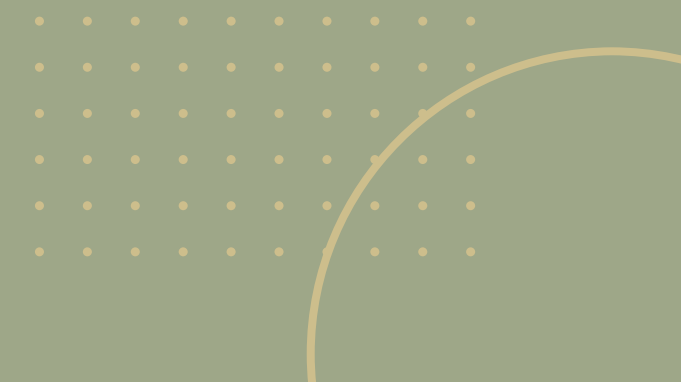


## Important things to consider...

- **Will your college of interest accept these credits?**
- **DE vs. AP**
- **Full time vs. Part time participation**
- **Transportation to the college might be necessary**
- **Scheduling conflicts**
  - **In-school and extracurricular responsibilities**
- **Cobb County and College calendars are different**
  - **Breaks, exam dates, etc.**



# Naviance



**NAVIANCE**



# **You can use Naviance for...**

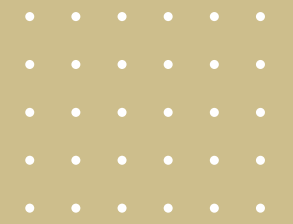
**College and Career Planning**

**Communicating with your Counselor**

**Scholarship Searching**

**Resume Building**

# **Today, You will complete...**



- **A Pathway Selection**
- **Your Individual Graduation Plan**
- **Dual Enrollment Survey**
- **Strengths Explorer Assessment**



# LOG INTO NAVIANCE

---


- Go to [www.waltonhigh.org](http://www.waltonhigh.org)
- Click on the diploma icon found on the top right of the page
- You will automatically be logged into Naviance via Clever








- If you are not on the CCSD network, you may be prompted to sign into Naviance. If so, log in using your Microsoft 365 username & password.

Username:	Password:
Microsoft 365 Username	Microsoft 365 Password


# New Naviance Homepage

 Naviance

[Home](#) [Self-Discovery](#) [Careers](#) [Colleges](#) [Planner](#)


     [Log Out](#)

## Noah's Future Planning



### No Path Selected

Plan for life after high school and select the path that will lead to future success.

 [Select Path](#)

## Welcome to Naviance

**IGP (individualized Graduation Plan) Link to CSIS:**

<https://parentportal.cobbk12.org/IGP/igpHighSch>

You must be on CCSD internet to access this link.

Use your computer login to access this page.

[Additional Information from Your School](#)

## Tasks from My School

# SELECT YOUR PATH

Select your path and click **Save**

☐ **Military Service**

Enlist in a branch of the U.S. Armed Forces right after high school or join after college by enrolling in a Reserve Officer Training Corps (ROTC) program.

☐ **Employment**

Enter the job force right after high school to develop work skills and learn from training or education.

☐ **Undecided**

Not sure what to do after high school? Talk to a school counselor about what's best.

☐ **Gap or Service Year**

Take a gap or service year between high school and the start of my postsecondary work, educational activities, or travel to give back to a community or to help the world.

☐ **College: Associate's Degree**

Earn an associate's degree or certificate in two years or less by attending a two-year community college or junior college.

☐ **College: Bachelor's Degree**

Earn a Bachelor's degree in four years by attending a four-year private or public college or university.

☐ **Career Education or Trade School**

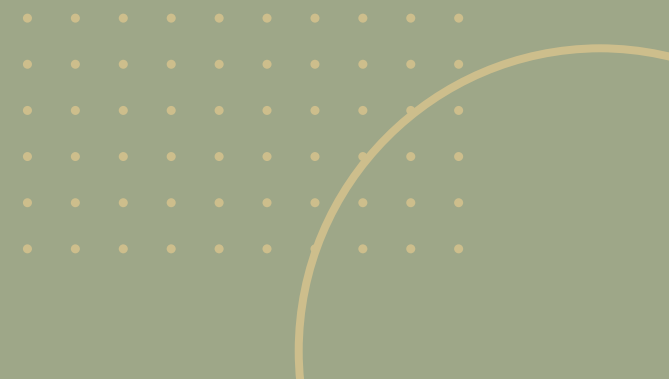
Enroll in a short-term training program at a career or vocational-technical college and earn a certificate or associate's degree for an industry such as health care, cosmetology, and plumbing.

☐ **Apprenticeship Program**

Enroll in an apprenticeship to get on-the-job training with classroom instruction and mentorship that leads to a skilled trade or profession.



# Individual Graduation Plan (IGP)



# Individual Graduation Plan

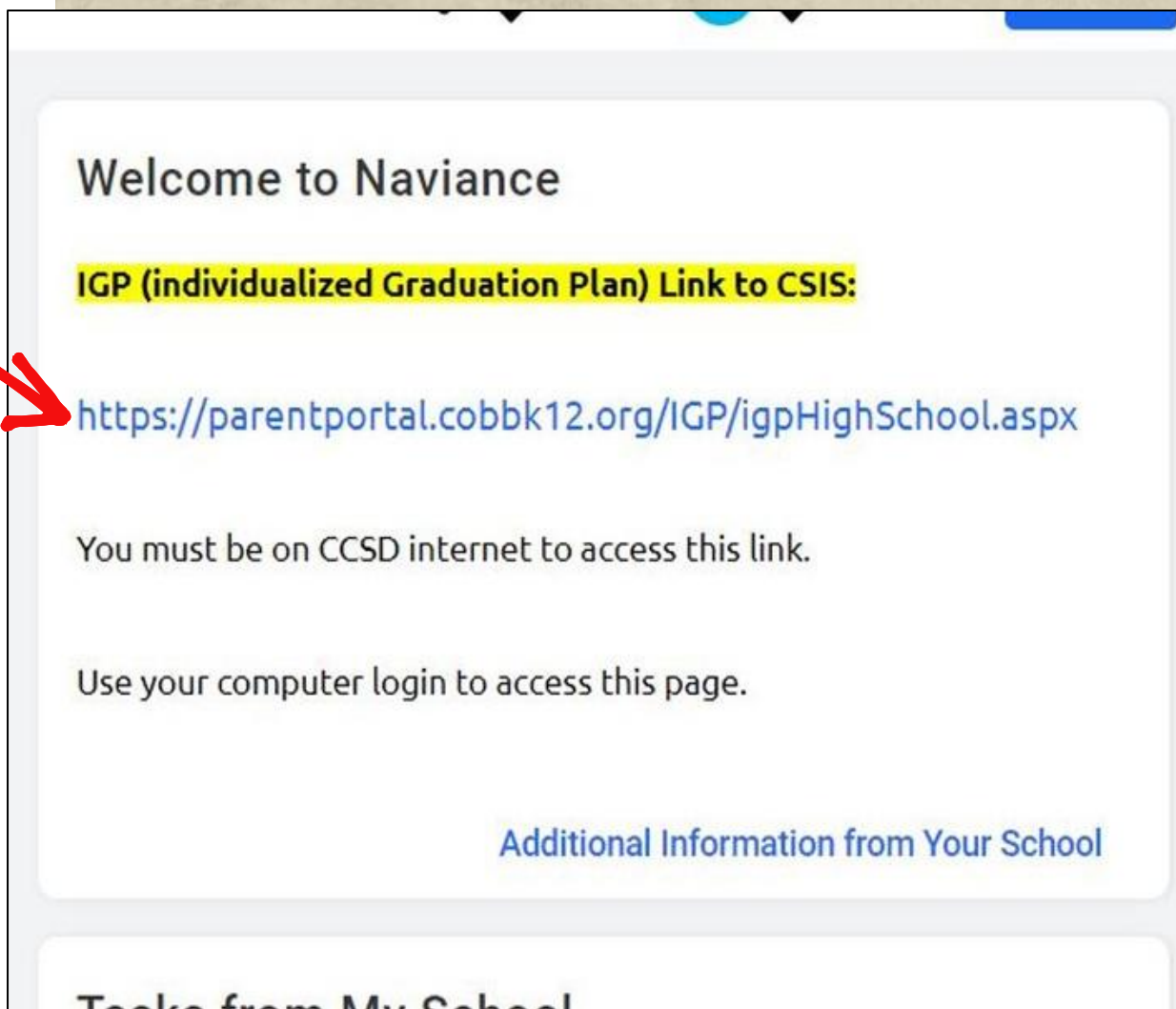
**Your Individual Graduation Plan (IGP) is a tool used to help you when choosing your 11th grade courses and to ensure you are on track for graduation.**

**You have already completed 9th grade. Today, you will be making any changes needed to 10th grade and predicting what courses to take next school year. Each student's plan will look different. Choose what works for you!**



# Individual Graduation Plan

**Go to your Naviance Home Page. On the right hand side, click the link indicated below.**



Welcome to Naviance

**IGP (individualized Graduation Plan) Link to CSIS:**

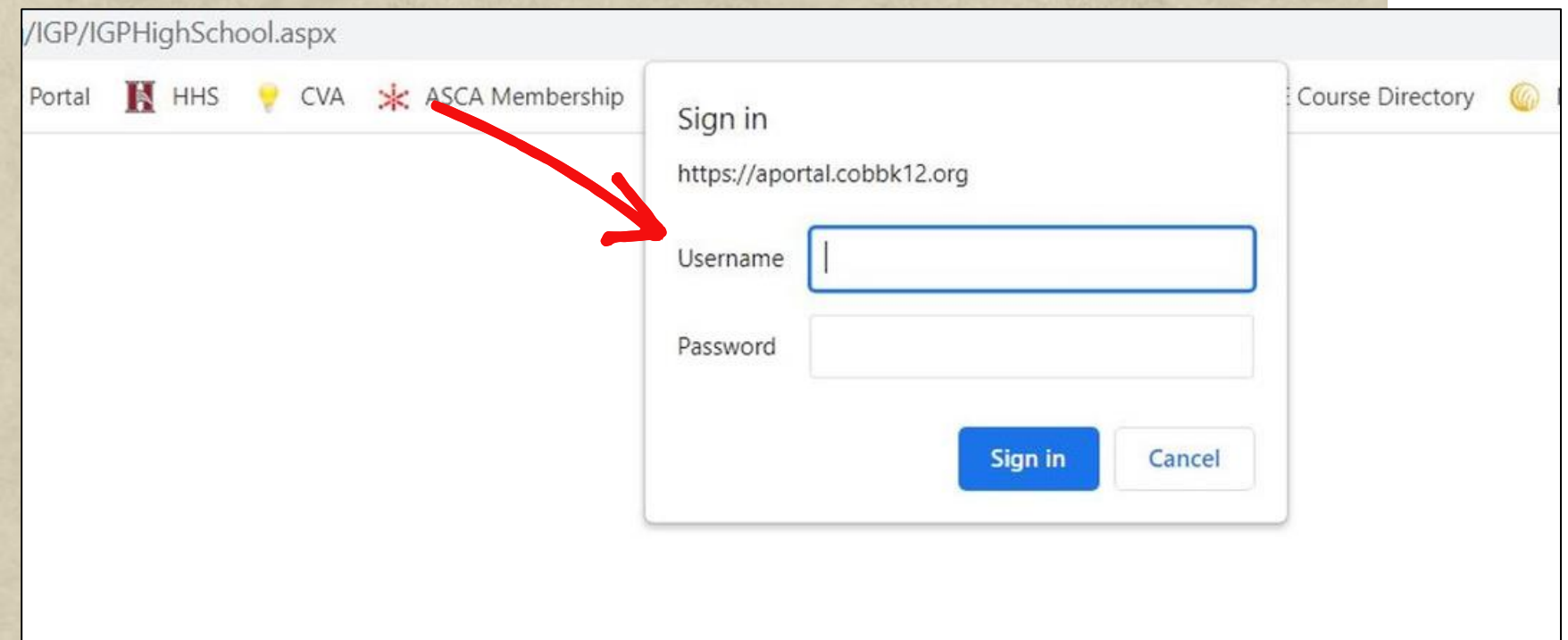
<https://parentportal.cobbk12.org/IGP/igpHighSchool.aspx>

You must be on CCSD internet to access this link.

Use your computer login to access this page.

[Additional Information from Your School](#)

Tools from My School



/IGP/IGPHighSchool.aspx

Portal HHS CVA ASCA Membership Course Directory

Sign in

<https://aportal.cobbk12.org>

Username

Password

**Sign in** Cancel

**Sign in with your CCSD  
Student ID and  
password.**

# HOW TO COMPLETE YOUR IGP

- Review your IGP that you completed last year during freshman advisement one subject at a time (ex: go **left to right** to complete all four years of English before moving on to Math).
- **Highlight** the course click **Remove** if you need to make change
- **Highlight** the course and click **Add** to add a course to your IGP
- Ensure that the number in the **Totals** column meets or exceeds the minimum graduation requirements per subject (ex: 4 English credits)


HS Credit earned in MS: ☐ Mathematics ☐ Foreign Lang. ☐ Science ☐ CTAE ☐ ART





Subject	Grade 9	Grade 10	Grade 11	Grade 12	Totals
<b>English</b> (4 units) <a href="#">(show/hide courses)</a>	<b>(1) Units</b> 9th Grade Literature American Literature World Literature Multicultural Literature British Literature AP Language AP Literature Other ELA Reg <input type="radio"/> Hn <input type="radio"/> AP <input type="radio"/> ACS <input type="radio"/> MAG <input type="radio"/> MOWR <input type="radio"/> Add 9th Grade Literature (Hn) Remove	<b>(1) Units</b> 9th Grade Literature American Literature World Literature Multicultural Literature British Literature AP Language AP Literature Other ELA Reg <input type="radio"/> Hn <input type="radio"/> AP <input type="radio"/> ACS <input type="radio"/> MAG <input type="radio"/> MOWR <input type="radio"/> Add World Literature (Hn) Remove	<b>(1) Units</b> 9th Grade Literature American Literature World Literature Multicultural Literature British Literature AP Language AP Literature Other ELA Reg <input checked="" type="radio"/> Hn <input type="radio"/> AP <input type="radio"/> ACS <input type="radio"/> MAG <input type="radio"/> MOWR <input type="radio"/> Add AP Language (AP) Remove	<b>(1) Units</b> 9th Grade Literature American Literature World Literature Multicultural Literature British Literature AP Language AP Literature Other ELA Reg <input checked="" type="radio"/> Hn <input type="radio"/> AP <input type="radio"/> ACS <input type="radio"/> MAG <input type="radio"/> MOWR <input type="radio"/> Add AP Literature (AP) Remove	<b>4</b>



# HOW TO COMPLETE YOUR IGP

---

- Electives — you can update your electives as needed in your plan
- You can enter a “General Elective” for 11<sup>th</sup> and 12<sup>th</sup> grade instead of entering specific electives by choosing 

<p>(2) Units</p> <p><input checked="" type="radio"/> Gen <input type="radio"/> Eng <input type="radio"/> Math <input type="radio"/> Sci <input type="radio"/> Soc</p> <p>Elective Course Name: (optional)</p> <p><input type="text"/></p> <p>Credit: 1 <input checked="" type="radio"/> 0.5 <input type="radio"/>  / </p> <p>(Gen) - Elective (1.0)</p> <p>(Gen) - Elective (1.0)</p>	<p>(2) Units</p> <p><input checked="" type="radio"/> Gen <input type="radio"/> Eng <input type="radio"/> Math <input type="radio"/> Sci <input type="radio"/> Soc</p> <p>Elective Course Name: (optional)</p> <p><input type="text"/></p> <p>Credit: 1 <input checked="" type="radio"/> 0.5 <input type="radio"/>  / </p> <p>(Gen) - Elective (1.0)</p> <p>(Gen) - Elective (1.0)</p>
---	---

# Individual Graduation Plan

**Finished?**

**Each column should have a total unit value of 6 that indicates the number of credits you have and will earn.**

college degree. Check with your school counselor for more information.  
e taken through Move On When Ready/Dual Enrollment.

☐ This Graduation Plan has been updated for this school year.

Submit

**When done, check the box and click "Submit".**

# BACK TO NAVIANCE HOME PAGE

## BRIDGE LAW: DUAL ENROLLMENT SURVEY

1

On the RIGHT side of your screen - Scroll down to "Tasks from My School"

2

Select "10<sup>th</sup> Grade - Dual Enrollment Survey"

3

Select "Take this survey" on the right side of your screen to begin the survey

4

Answer the question and click "Save and Finish"



**Back to Naviance home page**

**First, a career interest assessment**





# NEXT, COMPLETE THE *STRENGTHS EXPLORER*



Go to “Self Discovery” and click “Strengths Explorer”



Select: “Take Assessment”



A pop-up will appear with 3 boxes for you to acknowledge and check



Click “I Got It” and then Click “Start”

# 10th Grade Naviance Tasks

Once  
finished,  
click on  
"See  
Related  
Career  
Pathways"  
at the  
bottom.

## StrengthsExplorer



Completed on Jul 15, 2021

### Here are your top 3 themes.

Your top 3 themes are your areas of natural talent - ways in which we naturally think, feel, and act. We are all naturally good at some things, and the resources below will help you understand what those things are and the career pathways associated with them.

#### 1. Relating

You like to start friendships and keep them for a long time ? maybe even your whole life. You widen the circle of friends for yourself and others.

#### 2. Future Thinker

Your mind loves to think and dream about the future. You are a person who thinks about what is possible, not what is impossible.

#### 3. Caring

In your heart, helping other people is very important. You want to make the world better by helping people in small ways or big ways.

 View Full Report  View Your Workbook

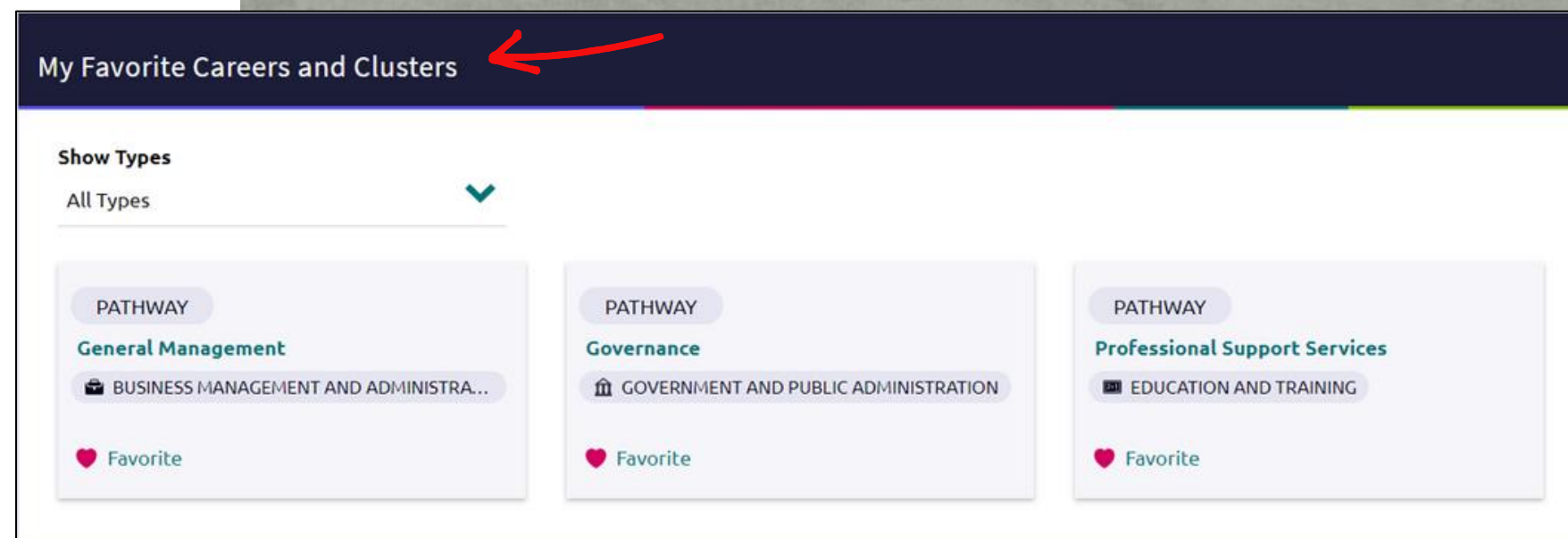
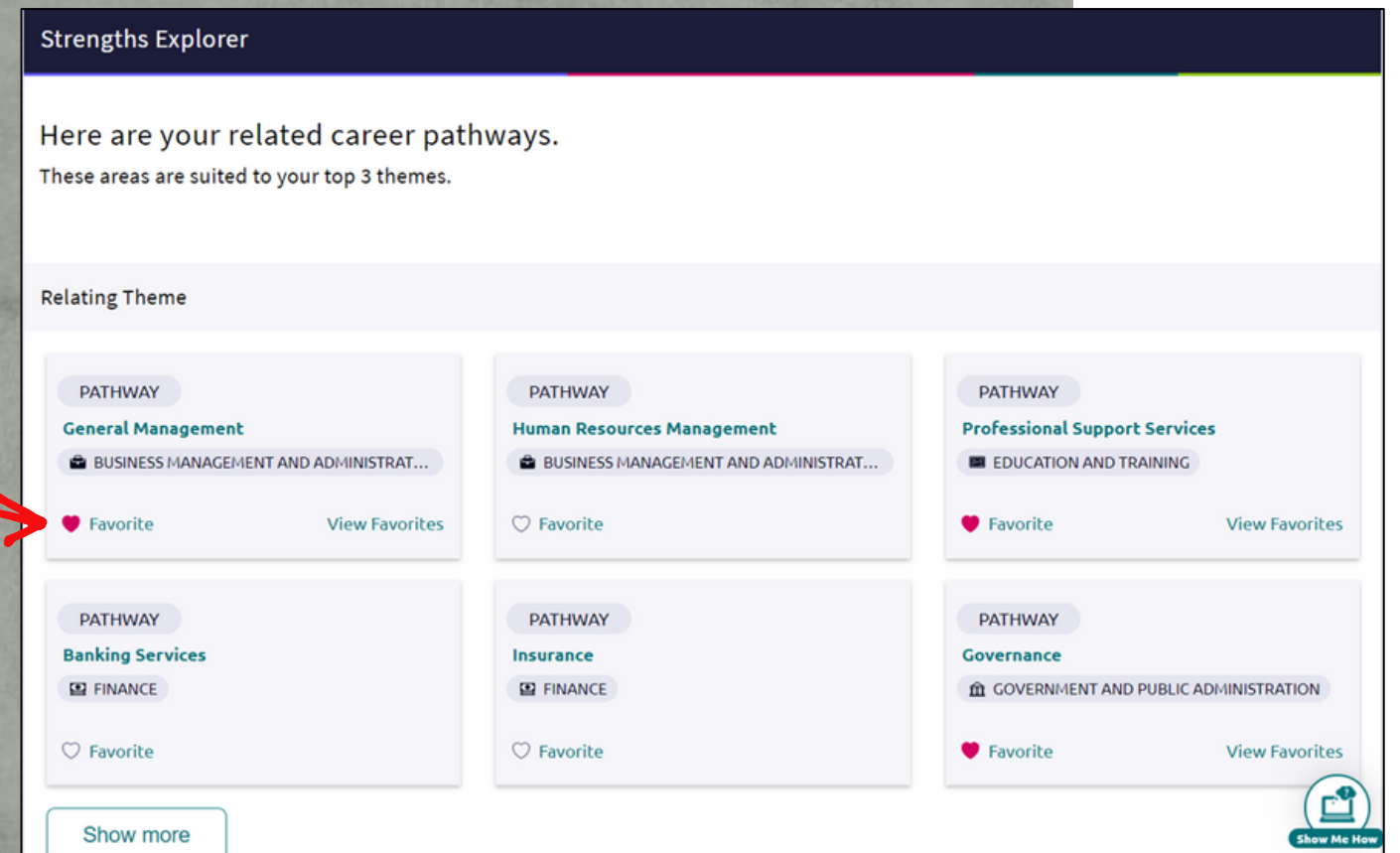
SEE RELATED CAREER PATHWAYS



Show Me How

# 10th Grade Naviance Tasks

Explore career suggestions  
and "favorite" 3 different  
career pathways.



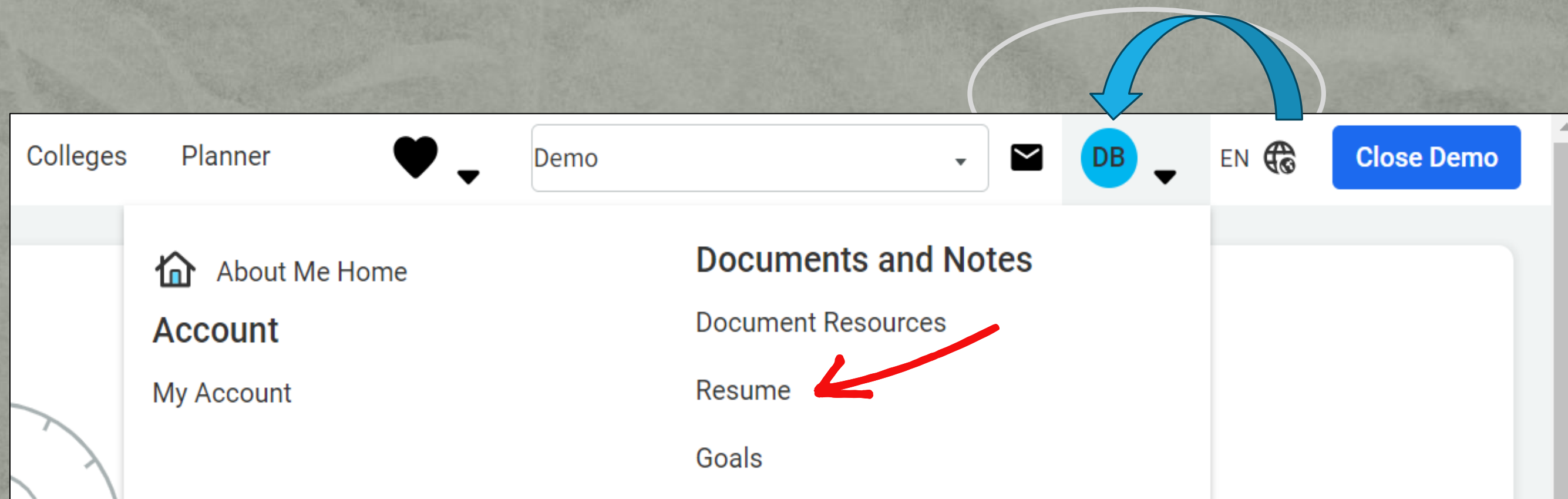
All "favorite" careers will now  
be under "My Favorite  
Careers and Clusters"



# 10th Grade Naviance Tasks

**Additional time?** For students looking to track job experience, workshops attended, or volunteer hours, feel free to take advantage of this opportunity to build your resume with Naviance!

**Click the BLUE Circle with your initials and then "Resume".**



# DON'T LOG OUT!

- ❑ GO to Naviance home page
- ❑ GO to "Planner" and then "Tasks"
- ❑ Then scroll down to "Tasks you need to work on"
- ❑ Wait for a school counselor to confirm your completion

## Tasks you Need to Work On



You're all set. You have nothing assigned to you.

# **10th Grade tasks completed!**







**"If you fall, we'll always  
be there."**

**–Your Walton School Counselors and The Floor**