



— CLASS of —
2025



Postsecondary Options,
College Planning, and
Summer Steps



How to prepare for senior year

Pre-Presentation Survey

Please use the QR code or type the link to take a quick survey before today's presentation



<https://forms.office.com/r/KzQ0B1TvW5>

Learning Objectives



Walton's Counseling Department

Who is my school counselor?

How do I get information from the school counseling department?



Post-secondary Options

What options are available to me after graduating from Walton?



College Admissions Factors

What factors influence college admissions decisions?



Building a College List

How do I research colleges?

How do I build a college list?



Summer Steps

What can I do over the summer to prepare for my senior year?

What is the Postsecondary Options Packet and when is it due?



School Counseling Department

- Who is my school counselor?
- How do I get information from the school counseling dept?



School Counselors



Mrs. Clary (A – Ch)
lauraclary@cobbk12.org



Mrs. Alpert (Ci – G)
betsy.alpert@cobbk12.org



Mrs. Dunham (H – K)
donna.dunham@cobbk12.org



Mrs. Watford (L – N)
erica.watford@cobbk12.org



Mrs. Harwood (O – Sl)
tina.harwood@cobbk12.org



Mrs. Fay (Sm – Z)
lisa.fay@cobbk12.org

School Counseling Support Staff



Dr. England

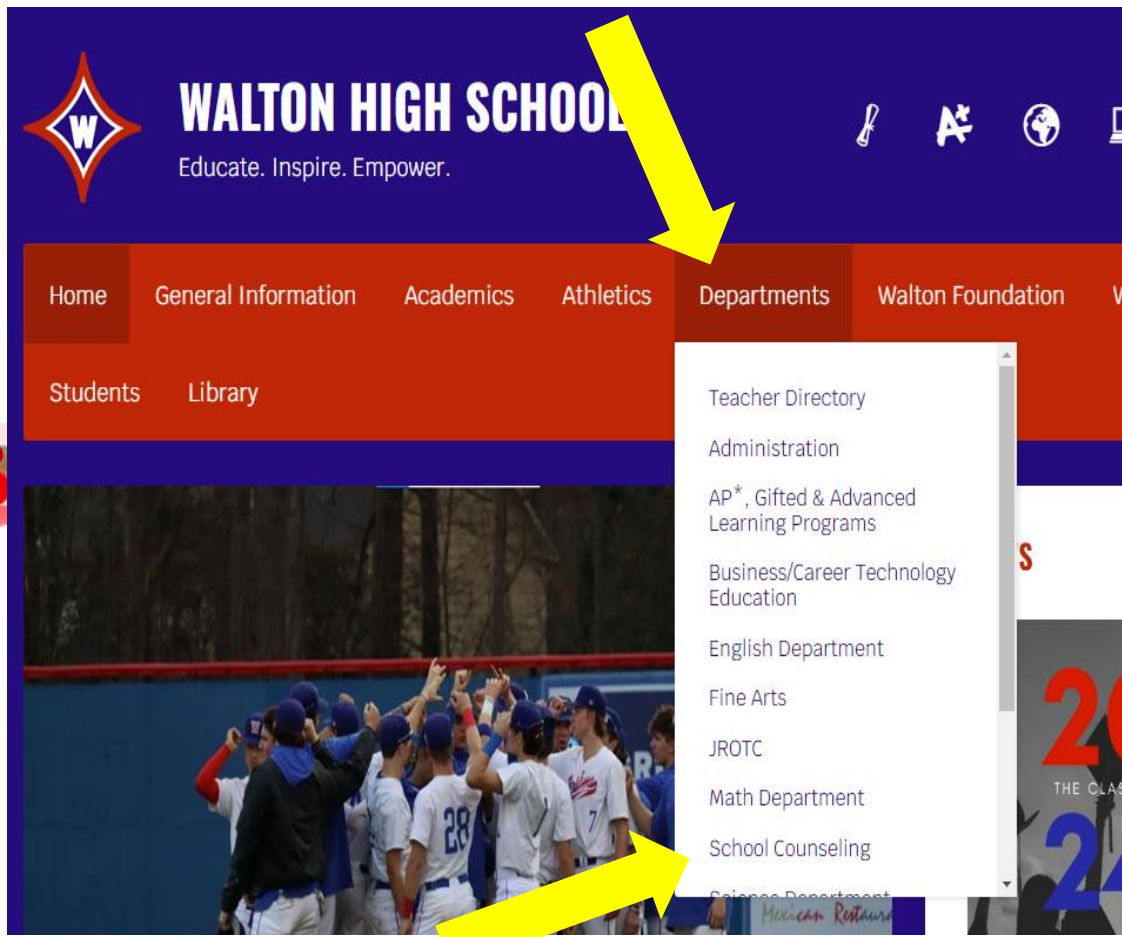
College Advisor
Scholarship Coordinator
Volunteer Service Hour Coordinator
rebecca.England@cobbk12.org



Mrs. Schrenk

Records Clerk
Located in the Records Room
in the Counseling Suite

School Counseling Website



Walton High School Counseling Department

1590 Bill Murdock Road • Marietta, GA 30062
Tel: 770.578.3225 • Fax: 770-578-3227

[New Student Enrollment Information](#)

[Upcoming Events](#)

www.waltonhighcounseling.com

School Counseling Social Media

FOLLOW US ON OUR

SOCIAL
MEDIA



@waltonhighcounselors



@waltoncounselor



@waltonhighcounselors



@walton_counselors



Scan QR code to follow us on your preferred social media platform





Postsecondary Options

What options are available to me after graduating from Walton?



Military

- Consult recruiter for military opportunities
- Explore ROTC scholarships
- Take the ASVAB (offered at Walton every fall & spring)
- Military academy appointments are highly competitive

	Websites	Military Academy
Air Force	www.af.mil and www.airforce.com	Air Force Academy www.usafa.af.mil
Army	www.army.mil and www.goarmy.com	West Point www.westpoint.edu
Coast Guard	www.uscg.mil and www.gocoastguard.com	US Coast Guard Academy www.uscga.edu
Marines	www.marines.mil and www.marines.com	Future Marines attend the US Naval Academy
Navy	www.navy.mil and www.navy.com	US Naval Academy www.usna.edu

Postsecondary Options cont.

Gap Year



- Internship and community service opportunities
- Work/volunteer for a non-profit organization
- Travel
- Work/career exploration
- [Gap year fair information](#)

Direct to Work



- Take the [ASVAB](#) for career exploration
- Research careers on [O*NET OnLine](#)
- Enroll in certification programs
- The HOPE Grant covers certain technical college certificate & diploma programs

Postsecondary Educational Options



You can attend several types of schools or colleges after graduating high school



Specialty or Trade School

- Certificate or diploma
- Examples:
 - Atlanta School of Massage
 - Aviation Institute of Maintenance



Community or Technical College

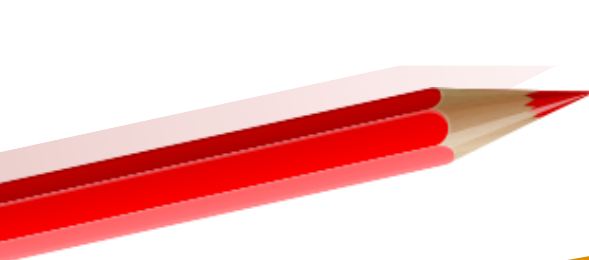
- Certificate, diploma, or associate's degree
- Examples:
 - Georgia Highlands College
 - Chattahoochee Technical College



4-Year College or University

- Bachelor's degree
- Examples:
 - The University of Georgia
 - Kennesaw State University





<input type="checkbox"/>	ADMIT
<input type="checkbox"/>	DEFER
<input type="checkbox"/>	DENY

College Admissions Factors

What factors influence college admissions decisions?



Let's brainstorm

What factors do you think influence college admissions decisions?

<https://tinyurl.com/mxydcxd>



Let's play

GPA Game

Shows how colleges use GPA, extracurricular activities, curriculum choices, and more when evaluating students for admissions



Factors in Colleges Admissions

- Extracurricular activities
- Essays
- Letters of recommendation

RIGOR/
QUALITY OF CLASSES

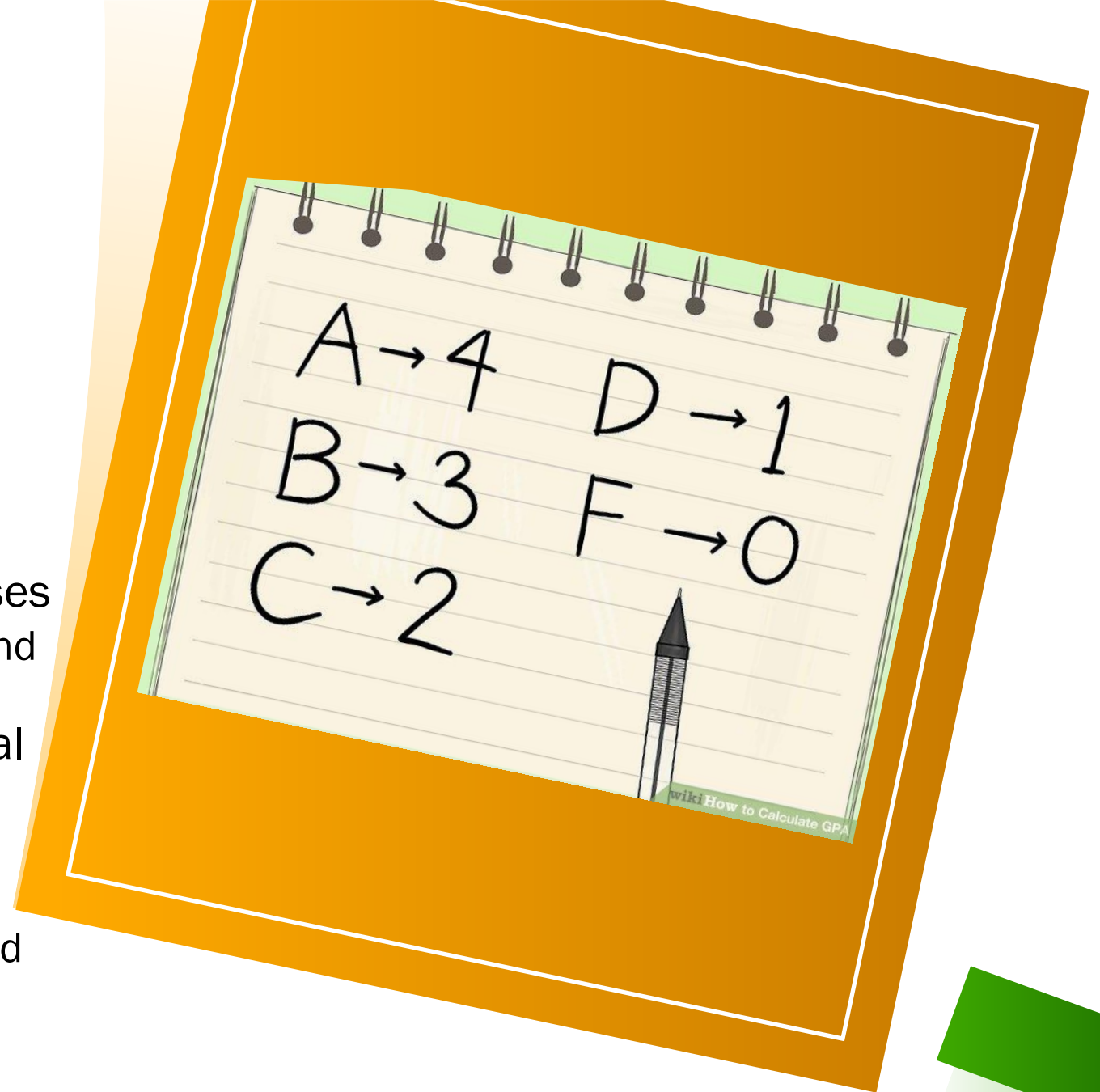
GRADES & GPA

TEST SCORES

How Colleges Calculate GPAs

Colleges use varying methods to calculate GPAs

- Typically recalculate GPAs from CORE classes
 - English, Math, Science, Social Studies, and World Language
- May or may not “weight” Honors, AP, or dual enrollment courses
 - Examples:
 - UGA only weights AP classes
 - Alabama and Auburn take Weighted GPA directly off Walton’s transcript
 - Univ of South Carolina weights Honors and AP courses the same



College Admissions Testing

What does “test optional” mean?

- Check college website for test optional status
- **ONLY** submit test scores that will enhance your overall application
 - Other application components may be weighed differently if you do not submit scores
- Upcoming testing dates:
 - SAT - www.collegeboard.org
 - May 4, 2024
 - June 1, 2024
 - ACT - www.act.org
 - June 8, 2024
 - July 13, 2024



College Admissions Essays Tips

Start early

Reflect on
personal
experiences

Be authentic

Focus on a
narrow topic

Follow
instructions

Edit and
revise

Seek
feedback

Proofread
carefully

Common App
essay prompts
are now
available!

Letters of Recommendation

Not all colleges require letters of rec

TEACHER LETTERS OF REC

- Verify whether the colleges you're applying to require or accept teacher letters of rec
- **ONLY** ask for letters from teachers if they are required or accepted
 - Personally request letters from teachers by **Sept. 1**
 - Choose at least one core academic teacher
 - Provide the Teacher Recommendation Form to each teacher
 - Download the Teacher Recommendation Form at www.waltonhighcounseling.com/class2025

COUNSELOR LETTER OF REC

- Counselors must have a completed Postsecondary Options Packet to write a letter of recommendation

Teacher Recommendation Information Form

This document should be TYPED and given to the teacher **by September 1st**. Be sure to request a recommendation in person before you give this document to the teacher.

NOTE: Not all colleges require a letter of recommendation.

Today's Date: Click or tap here to enter text.
Teacher's Name: Click or tap here to enter text.
Student's Name: Click or tap here to enter text.
Student's Email: Click or tap here to enter text.
Student's Cell Phone: Click or tap here to enter text.
Year and Class, you had this teacher: Click or tap here to enter text.
First Deadline that requires this teacher recommendation: Click or tap here to enter text.

Major (including Undecided): Click or tap here to enter text.
Career (including Undecided): Click or tap here to enter text.

- 1) I am asking you to write a college recommendation letter because: Click or tap here to enter text.
- 2) The best piece of work (composition, research paper, lab, etc.) that I did for your class: Click or tap here to enter text.
- 3) My proudest moment in your classroom: Click or tap here to enter text.
- 4) My favorite memory of your class: Click or tap here to enter text.
- 5) The experience or specific assignment that challenged me the most in your class: Click or tap here to enter text.
- 6) I believe I grew in your class because: Click or tap here to enter text.
- 7) I would describe myself using the following words (two to three qualities or character traits): Click or tap here to enter text.
- 8) The characteristic I most want colleges to know about me: Click or tap here to enter text.
- 9) The following would be a helpful bit of information to include in my recommendation letter: Click or tap here to enter text.
- 10) My grade(s) in your class: _____ 1st semester and _____ 2nd semester. I made a _____ on the AP exam for this course (if applicable). I believe my grade in your class is/is not an accurate reflection of my work (why or why not): Click or tap here to enter text.

Postsecondary Options Packet

The Postsecondary Options Packet is part of your senior summer English assignments

- Email your Postsecondary Options Packet to your school counselor by **Thursday, August 1**
- Counselors use the information you provide in the Postsecondary Options Packet when writing letters of recommendation
 - Be accurate
 - Provide very specific examples
 - The more information you provide, the better
- Download the Postsecondary Options Packet at www.waltonhighcounseling.com/class2025

Post-Secondary Options Packet
Walton High School
1590 Bill Murdock Road
Marietta, Ga 30062
CEEB School Code: 111987

*****WHEN COMPLETED - email this packet directly to your School Counselor, due the 1st day of school*****

Name: Enter first and last name
Email: Enter email address
Cell Phone: Enter phone number.
Current Weighted GPA: Click or tap here to enter text.

Senior Year Classes:

First Semester Classes		Second Semester Classes (Tentative)	
Click or tap here to enter text.	Click or tap here to enter text.	Click or tap here to enter text.	Click or tap here to enter text.
Click or tap here to enter text.	Click or tap here to enter text.	Click or tap here to enter text.	Click or tap here to enter text.
Click or tap here to enter text.	Click or tap here to enter text.	Click or tap here to enter text.	Click or tap here to enter text.
Click or tap here to enter text.	Click or tap here to enter text.	Click or tap here to enter text.	Click or tap here to enter text.
Click or tap here to enter text.	Click or tap here to enter text.	Click or tap here to enter text.	Click or tap here to enter text.
Click or tap here to enter text.	Click or tap here to enter text.	Click or tap here to enter text.	Click or tap here to enter text.

Teachers who know you well:

1. Teacher #1.
2. Teacher #2.
3. Teacher #3.

School Activities: (Ex. Clubs, teams, sports, performing arts)

Name of group	Grade or age participated	Responsibilities or office held (if applies)
Click to enter name of group.	Grade/age	Responsibilities
Click to enter name of group.	Grade/age	Responsibilities
Click to enter name of group.	Grade/age	Responsibilities
Click to enter name of group.	Grade/age	Responsibilities
Click to enter name of group.	Grade/age	Responsibilities
Click to enter name of group.	Grade/age	Responsibilities

Outside Activities: (Ex. church, community involvement, etc.)

Name of group	Grade or age participated	Responsibilities (if applies)
Click to enter name of group.	Grade/age	Responsibilities
Click to enter name of group.	Grade/age	Responsibilities
Click to enter name of group.	Grade/age	Responsibilities
Click to enter name of group.	Grade/age	Responsibilities



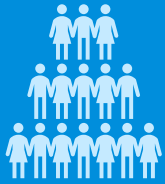
Building a College List

- How do I research colleges?
- How do I build a college list?

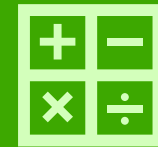


College Fit

Campus size
& location



Programs &
majors



**COLLEGE
FIT**



Cost

On-campus
activities



HOPE Scholarship

4-year public colleges & universities in Georgia (ex: UGA, KSU)

	HOPE GPA	Rigor Courses	SAT/ACT Score (one sitting)	Approx. Tuition Coverage
HOPE Scholarship	3.0	4	n/a	portion (changes yearly)
Zell Miller Scholarship	3.7	4	1200 (SAT) 25 (ACT)	100%

Technical College System of Georgia (ex: Chatt Tech, Lanier Tech) Certificate or diploma programs

	HOPE GPA	Rigor Courses	SAT/ACT Score	Approx. Tuition Coverage
HOPE Grant	n/a	n/a	n/a	portion (changes yearly)
Zell Miller Grant (3.5 college GPA)	n/a	n/a	n/a	100%

Selective College Scholarships

School	Name of Scholarship	Website
Davidson College	Belk Scholarship	https://www.davidson.edu/admission-and-financial-aid/financial-aid/types-financial-aid/scholarships/nomination-scholarships/john-m-belk-scholarship
Indiana University	Wells Scholarship	https://wellsscholars.indiana.edu
Northeastern University	Torch Scholars Program	https://torch.northeastern.edu
Bard College Boston College Brandeis University Texas A&M University The College of Wooster The George Washington University	Posse Foundation Scholarship	www.possefoundation.org and www.possefoundation.org/sites/atlanta
University of North Carolina at Chapel Hill	Morehead-Cain Scholarship	https://www.moreheadcain.org
University of Virginia	Jefferson Scholarship	https://www.jeffersonscholars.org

Reach, Match, & Likely Schools

Reach schools

- Academic credentials fall below the school's range for the freshman class
- Apply to 1 – 2 schools

Match schools

- Academic credentials fall within or slightly higher than the school's range for the freshman class
- Apply to 2 – 3 schools

Likely schools

- Academic credentials are much higher than the typical range for their freshman class
- Apply to at least 1 school

Common App

What is the Common App?

- The Common App serves as a universal college admission application accepted by over 1000 colleges and universities
- Colleges and universities that accept the Common App:
 - www.commonapp.org/explore
- Common App essay prompts are **now available**
 - www.commonapp.org/blog/common-app-announces-2024-2025-common-app-essay-prompts
- Common App applications open **August 1**
 - <https://www.commonapp.org>

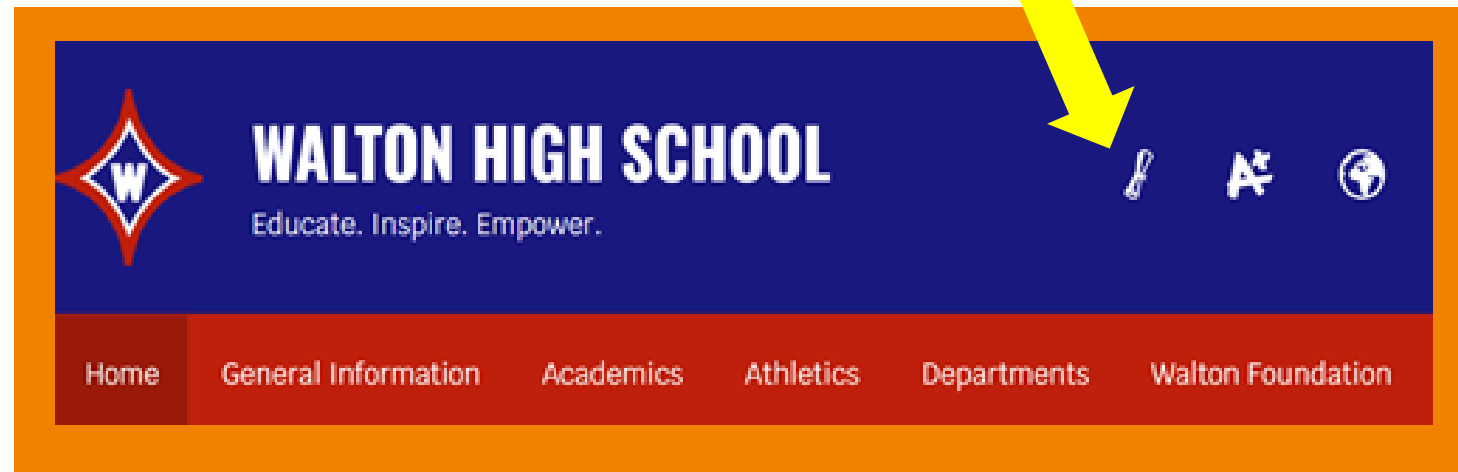


How to Use SuperMatch College Search in Naviance

- Located in Naviance
- Explore options and discover colleges that are a match with your academic profile and what you're looking for in a college experience

How to log into Naviance

1. Go to www.waltonhigh.org
2. Click on the **diploma icon** to log into Naviance
3. You will automatically be logged in through Clever
4. Use your Office 365 login information to access Naviance from home



How to Use SuperMatch College Search



1. Select **Colleges**
2. Select **SuperMatch College Search** under **Find Your Fit**
3. Select **Select Criteria To Start**
4. Continue refining your search by selecting **Choose Fit Criteria** at the top
5. Sort your criteria into the **Must Have** and **Nice to Have**
6. Select **Pin To Compare** colleges on your results list
7. Select **Favorite** to add colleges you are interested and want to learn more about
8. Select **Save Search** and name the search
9. Select **Colleges** and **Colleges I'm Thinking About** to research about the colleges on your favorites list
10. Repeat the above steps to start a new search or edit a saved search

8 selected criteria
To refine your results, use the arrows to move your criteria into the "Must Have" and "Nice to Have" boxes.

Must Have

- × Athletics [1] →
- × Campus Surroundings [2] →
- × Cost < \$60000 →
- × Greek Life →
- × Organizations and Clubs [2] →

Nice to Have

- × Location [9] ←
- × Master's [1] ←
- × Internships and Co-ops ←

Your Results Your results include 0 institutions that are both an academic match and also match all the criteria selected above.

	Fit Score	Academic Match	Highlights	Cost	Pick what to see
University of Miami Coral Gables, FL, Suburb near Large City 4 year, Private nonprofit ★ PINNED ♥ FAVORITE	84% Why?	Average You GPA 3.8 N/A0 SAT 1390 N/A ACT 32 N/A <small>To determine if you're an academic match for this institution, enter your GPA and/or standardized test scores.</small>	Photos/Videos on Profile Program Spotlights Virtual Tour	Tuition & Fees \$47,040 Room & Board \$13,666	Customize what you see category at
Faulkner University Montgomery, AL, Suburb near Large City 4 year, Private nonprofit, Churches of Christ ★ PINNED ♥ FAVORITED	77% Why?	Average You GPA 2 N/A0 SAT 1000 N/A ACT 20.5 N/A <small>To determine if you're an academic match for this institution, enter your GPA and/or standardized test scores.</small>	No Highlights Available	Tuition & Fees \$19,160 Room & Board \$7,400	Customize what you see category at



How to Research Colleges

1. Select **Colleges**
2. Select **Colleges I'm Thinking About**
3. Select the college you want to research
4. Review the college's general information in **Overview**
5. Scroll down to see how your GPA and test scores compare with others who have applied to the college
6. Continue researching the college by selecting **Studies, Student Life, Admissions, and Costs**
7. To learn even more about the college, return to **Colleges I'm Thinking About**
8. Select **More**
9. Select **Scattergram** to view Walton's Application History, Acceptance Rate, Application Requirements, Recommended Courses, Application Factors, and Application Information
10. Select **Communicate** if you would like to send a message to the admission office



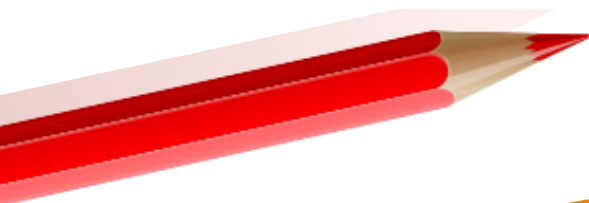
How to Add "Colleges I'm Thinking About"

- Receive email updates with information about these colleges
- Receive notifications when these colleges visit Walton
- Already includes the colleges you have favored by clicking the ♥ icon

1. Select **Colleges**
2. Select ♥ **Colleges I'm Thinking About**
3. Select **+Add Colleges to List**
4. Search for college by name, state, or key word
5. Click on the ♥ icon next to the college

Note: You will not be able to add "Colleges I'm Applying To" until mid-August

Colleges I'm thinking about						
						Search for colleges
+ Add Colleges to List			Compare Me			
♥	* Georgia College - Milledgeville	Milledgeville, GA				
* Georgia College - Milledgeville	CA	Student	N/A	Multiple Deadlines	▼N/A	MORE
* Kennesaw State University		Student	N/A	Multiple Deadlines	▼N/A	MORE
University of North Georgia		Student	N/A	Multiple Deadlines	▼N/A	MORE
* Samford University	CA	Student	N/A	Multiple Deadlines	▼N/A	MORE



Summer Steps

- What can I do over the summer to prepare for my senior year?
- What is the Postsecondary Options Packet?



Summer Steps Checklist



- **REVIEW**
today's
PowerPoint

- **DECIDE**
which post-
secondary
option is right
for you

- **RESEARCH**
technical, 2-year,
and 4-year
colleges and
universities

- **REGISTER**
for the SAT or
ACT if needed

Summer Steps Checklist



- **DRAFT**
Common App essays if applying to Common App schools

- **COMPLETE**
Postsecondary Options Packet and email it to your school counselor by **August 1**

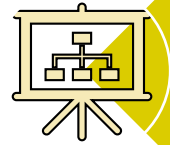
- **OPTIONAL**
complete the Teacher Recommendation Form for each teacher you will ask to write a letter of rec (2 max)

- **OPTIONAL**
register for the [NCAA Eligibility Center](#) if you plan to play sports at a D1 or D2 college

Upcoming Events for Senior Year (dates TBD)



JUNIOR College Jumpstart Program with Optional College Essay Writing Workshop
Saturday, April 27 from 9:00 am – 12:00 pm
Register at <https://form.jotform.com/240074196356155>



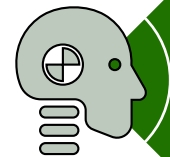
Postsecondary Presentation for all Senior English classes



Senior Family Night



Financial Aid Night



ASVAB test

Class of 2025 Website

www.waltonhighcounseling.com/class2025

- Downloadable PDFs
 - PowerPoint of presentation
 - Summer Steps Checklist
 - Postsecondary Options Packet
 - Teacher Recommendation Form
- Detailed Summer Steps
 - Naviance college tools
 - SuperMatch College Search
 - How to research colleges
 - How to add “Colleges I’m Thinking About”
 - SAT & ACT registration & dates
 - Common App schools & essay prompts
- Upcoming Fall Events



Post-Presentation Survey

Please use the QR code or link to take a quick survey after today's presentation



<https://forms.office.com/r/acr3m1b8iM?origin=lprLink>



For more info, visit
[www.waltonhighcounseling.com/
class2025](http://www.waltonhighcounseling.com/class2025)

Have a great summer!

